

## KATELLA Box Pack Specifications



SATIN NICKEL



MATTE BLACK



These finishes are available with Microban anti-microbial coating: 15 and 514

### AVAILABLE FUNCTIONS:



Passage





Privacy



Entry



Inactive

KAL		 20 min.	 3 Hour	Satin Nickel	Matte Black
Passage	GLA101 KAL	<input type="checkbox"/>	<input type="checkbox"/>	<input type="checkbox"/>	<input type="checkbox"/>
Privacy	GLA331 KAL	<input type="checkbox"/>	<input type="checkbox"/>	<input type="checkbox"/>	<input type="checkbox"/>
Entry	GLA535 KAL	<input type="checkbox"/>	<input type="checkbox"/>	<input type="checkbox"/>	<input type="checkbox"/>
Inactive	GLA12 KAL	<input type="checkbox"/>	<input type="checkbox"/>	<input type="checkbox"/>	<input type="checkbox"/>

## SPECIFICATIONS

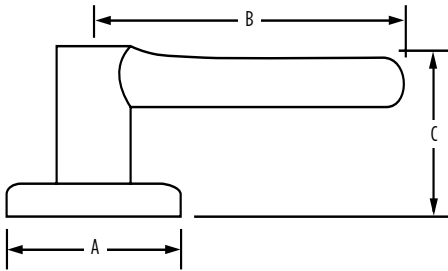


20 min.



3 Hour

<b>Door Prep</b>	Cross Bore 2-1/8" Edge Bore 1" Latch Face 1" x 2-1/4"
<b>Backset</b>	Adjustable to 2-3/8" or 2-3/4"
<b>Door Thickness</b>	1-3/8" - 1-3/4" doors standard. 2-1/4" doors optional
<b>Cylinder</b>	SmartKey standard, see specific product for more WS and KW availability
<b>Faceplates</b>	1" x 2-1/4". Round corner, square corner and drive-in available in box
<b>Strikes</b>	2-1/4" full lip. Other options available
<b>Bolt</b>	1/2" throw. Nickel plated
<b>Door Handing</b>	Reversible for right or left-hand doors
<b>ANSI/BHMA</b>	A156.2 Grade 2
<b>ADA</b>	Functions GLA 101, GLA 12 satisfies section 4.13.9 ADA Requirement
<b>UL</b>	Fire rating, see specific product for availability
<b>ASTM</b>	All Weiser product meets ASTM E 331 water penetration testing



Dimensions	A	B	C	C (Keyed)
Katella	2 1/16"	4 1/4"	2 15/32"	2 9/16"

## WARRANTY:

Weiser™ products provide a "Lifetime Mechanical Warranty" that covers all defects in material and workmanship. For more information, please visit [ca.weiserlock.com/en/warranty/](http://ca.weiserlock.com/en/warranty/).